


# Medical Speciality Admission Alternatives

Could your patient be managed as an urgent outpatient in the community?


## Diabetes and Endocrinology

**Outreach Consultant** available via ConsultantConnect or switchboard

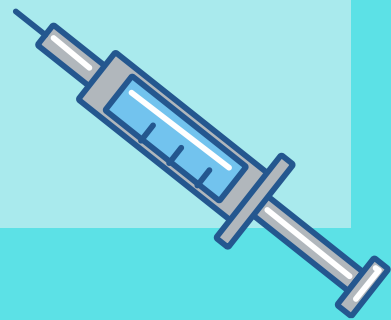
**Hospital DSN** available via DNS connect,

 **ext 4137, 07775 012696 or bleep 2141 Mon-Fri 8-4**

**Community DSN** for new or known dependent patients  
Mon-Fri 8-4

 **07917 553963**

**CNS Hot Clinic** every Mon & Thurs (can sometimes offer home visits) - contact DSN's to book in.



## Cardiology

There are urgent weekly clinic appointments for heart failure, AF & chest pain.

Refer to Cardiology Outreach for:

- Urgent clinic appointments
- Telephone advice
- Outreach Consultant available via switchboard (SWFT) or ConsultantConnect (GP advice and guidance)
- ADU slot

**Bleep 2134 8-6 Mon-Fri**

**or**


**out of hours email**

**[cardiologyinpatientreferrals@swft.nhs.uk](mailto:cardiologyinpatientreferrals@swft.nhs.uk)**



## Gastroenterology

For advice, review or to refer **NEW** patients to clinic

 SpR bleep 5134  
(not always monitored)

or Consultant of the Week via switch

For advice or to refer **KNOWN** patients

 Gastro CNSs on ext 4327

### Urgent clinic slots:

IBD clinic (Fri am)

Liver clinic (Tues pm)

HPB clinic (Mon am)

## Elderly Care

Contact the Frailty Team for Comprehensive Geriatric Assessment on FAU

 ext 8658, 8659 or 07789 945003

(approx 40% same day discharge)

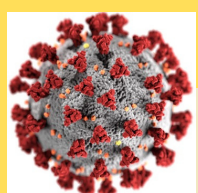
Consider discharge home with CERT or community nursing input via the ICC hub



## Rheumatology

For advice and guidance contact Consultant of the Day via [rheumatology.secretaries@swft.nhs.uk](mailto:rheumatology.secretaries@swft.nhs.uk) including a direct phone number for a call-back and/or an email address.

Current patients can ring the Rheumatology Advice Line on 01926 482615 (eg flare/DMARD queries) or view the Covid FAQs at <https://www.swft.nhs.uk/our-services/adult-hospital-services/rheumatology>



## Covid Virtual Clinics

GPs, Hot Hubs and ED can refer patients with suspected/confirmed Covid19 for virtual monitoring with pulse oximetry. For more information and to refer:

<https://www.coventryrugbygateway.nhs.uk/pages/covid-oximetryhome-virtual-ward/>



There is a direct telephone to SWFT **01926 419439** and you can contact a Consultant in the Emergency Department for patient advice on **01926 567 129**.